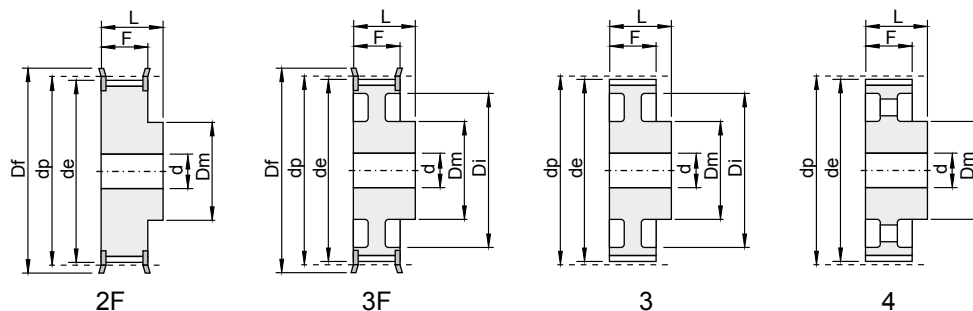


# Koła zębate

Koła zębate o podziółce metrycznej **8M**



**8M**

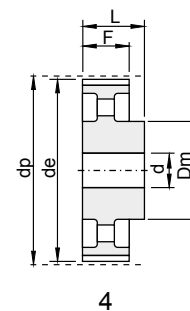
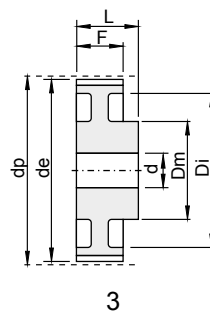
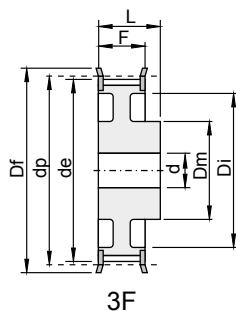
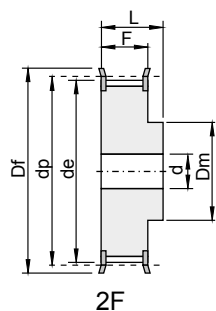
podziółka: 8 mm  
koła dla pasa o szerokości: 20 mm

kod	typ	rysunek	materiał	Z	dp	de	Df	Dm	Di	F	L	d	numer flanszy	[kg]
F0098	22 8M 20	2F	St	22	56,02	54,65	60	43	-	28	38	12	308	0,54
F0099	24 8M 20	2F	St	24	61,11	59,75	66	45	-	28	38	12	310	0,65
F0100	26 8M 20	2F	St	26	66,21	64,84	70	48	-	28	38	12	311	0,80
F0101	28 8M 20	2F	St	28	71,30	70,08	75	50	-	28	38	15	312	0,88
F0102	30 8M 20	2F	St	30	76,39	75,13	83	55	-	28	38	15	314	1,00
F0103	32 8M 20	2F	St	32	81,49	80,16	87	60	-	28	38	15	315	1,20
F0104	34 8M 20	2F	St	34	86,58	85,22	91	70	-	28	38	15	316	1,40
F0105	36 8M 20	2F	St	36	91,67	90,30	97	75	-	28	38	15	319	1,60
F0106	38 8M 20	2F	St	38	96,77	95,39	102	75	-	28	38	15	320	1,70
F0107	40 8M 20	2F	St	40	101,86	100,49	106	75	-	28	38	15	321	1,85
F0108	44 8M 20	2F	St	44	112,05	110,67	120	75	-	28	38	15	325	2,10
F0109	48 8M 20	2F	St	48	122,23	120,86	128	75	-	28	38	15	327	2,44
F0110	56 8M 20	3F	St	56	142,60	141,23	150	80	116	28	38	15	333	2,60
F0111	64 8M 20	3F	St	64	162,97	161,60	168	80	137	28	38	15	338	2,90
F0112	72 8M 20	3F	St	72	183,35	181,97	192	80	158	28	38	15	340	3,10
F0113	80 8M 20	3	GG	80	203,72	202,35	-	90	180	28	38	15	-	3,80
F0114	90 8M 20	4	GG	90	229,18	227,81	-	90	204	28	38	15	-	4,20
F0115	* 112 8M 20	4	GG	112	285,21	283,83	-	90	254	28	38	18	-	5,20
F0116	* 144 8M 20	4	GG	144	366,69	365,32	-	90	336	28	38	20	-	7,50
F0117	* 168 8M 20	4	GG	168	427,81	426,44	-	100	400	28	38	20	-	10,00
F0118	* 192 8M 20	4	GG	192	488,92	487,55	-	100	460	28	38	20	-	14,40

\*Na specjalne zamówienie.

# Koła zębate

Koła zębate o podziałce metrycznej **8M**



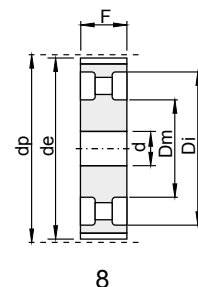
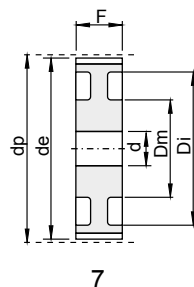
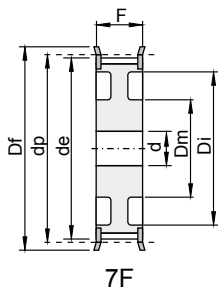
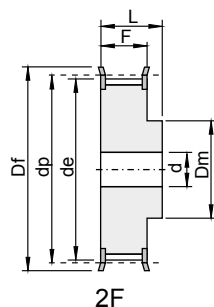
**8M**

podziałka: 8 mm  
koła dla pasa o szerokości: 30 mm

kod	typ	rysunek	materiał	Z	dp	de	Df	Dm	Di	F	L	d	numer flanszy	[kg]
F0119	22 8M 30	2F	St	22	56,02	54,65	60	43	-	38	48	12	308	0,75
F0120	24 8M 30	2F	St	24	61,11	59,75	66	45	-	38	48	12	310	0,90
F0121	26 8M 30	2F	St	26	66,21	64,84	70	48	-	38	48	12	311	1,10
F0122	28 8M 30	2F	St	28	71,30	70,08	75	50	-	38	48	15	312	1,20
F0123	30 8M 30	2F	St	30	76,39	75,13	83	55	-	38	48	15	314	1,32
F0124	32 8M 30	2F	St	32	81,49	80,16	87	60	-	38	48	15	315	1,55
F0125	34 8M 30	2F	St	34	86,58	85,22	91	70	-	38	48	15	316	1,80
F0126	36 8M 30	2F	St	36	91,67	90,30	97	75	-	38	48	15	319	2,10
F0127	38 8M 30	2F	St	38	96,77	95,39	102	75	-	38	48	15	320	2,30
F0128	40 8M 30	2F	St	40	101,86	100,49	106	75	-	38	48	15	321	2,47
F0129	44 8M 30	2F	St	44	112,05	110,67	120	75	-	38	48	15	325	2,80
F0130	48 8M 30	2F	St	48	122,23	120,86	128	75	-	38	48	15	327	3,20
F0131	56 8M 30	3F	St	56	142,60	141,23	150	90	116	38	48	15	333	3,60
F0132	64 8M 30	3F	St	64	162,97	161,60	168	90	137	38	48	15	338	4,30
F0133	72 8M 30	3F	St	72	183,35	181,97	192	95	158	38	48	15	340	4,80
F0134	80 8M 30	3	GG	80	203,72	202,35	-	100	180	38	48	15	-	5,10
F0135	90 8M 30	4	GG	90	229,18	227,81	-	100	204	38	48	15	-	5,70
F0136	112 8M 30	4	GG	112	285,21	283,83	-	100	254	38	48	18	-	6,80
F0137	144 8M 30	4	GG	144	366,69	365,32	-	100	336	38	48	20	-	9,30
F0138	168 8M 30	4	GG	168	427,81	426,44	-	100	400	38	48	20	-	11,40
F0139	192 8M 30	4	GG	192	488,92	487,55	-	100	460	38	48	20	-	16,00

# Koła zębate

Koła zębate o podziałce metrycznej **8M**



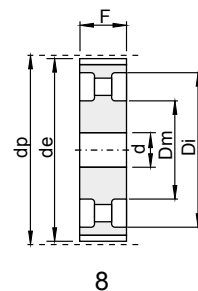
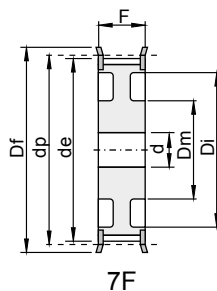
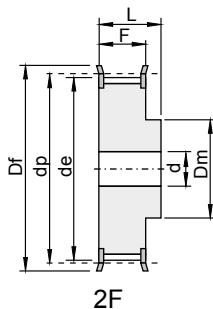
**8M**

podziałka: 8 mm  
koła dla pasa o szerokości: 50 mm

kod	typ	rysunek	materiał	Z	dp	de	Df	Dm	Di	F	L	d	numer flanszy	[kg]
F0140	22 8M 50	2F	St	22	56,02	54,65	60	43	-	60	70	12	308	1,10
F0141	24 8M 50	2F	St	24	61,11	59,75	66	45	-	60	70	12	310	1,30
F0142	26 8M 50	2F	St	26	66,21	64,84	70	48	-	60	70	15	311	1,60
F0143	28 8M 50	2F	St	28	71,30	70,08	75	50	-	60	70	15	312	1,70
F0144	30 8M 50	2F	St	30	76,39	75,13	83	55	-	60	70	15	314	2,00
F0145	32 8M 50	2F	St	32	81,49	80,16	87	60	-	60	70	15	315	2,35
F0146	34 8M 50	2F	St	34	86,58	85,22	91	66	-	60	70	15	316	2,80
F0147	36 8M 50	2F	St	36	91,67	90,30	97	70	-	60	70	15	319	3,10
F0148	38 8M 50	2F	St	38	96,77	95,39	102	75	-	60	70	15	320	3,30
F0149	40 8M 50	2F	St	40	101,86	100,49	106	75	-	60	70	18	321	3,50
F0150	44 8M 50	2F	St	44	112,05	110,67	120	75	-	60	70	18	325	3,90
F0151	48 8M 50	2F	St	48	122,23	120,86	128	80	-	60	70	18	327	4,30
F0152	56 8M 50	7F	St	56	142,60	141,23	150	90	116	60	60	18	333	5,00
F0153	64 8M 50	7F	St	64	162,97	161,60	168	100	137	60	60	18	338	5,60
F0154	72 8M 50	7F	St	72	183,35	181,97	192	100	158	60	60	18	340	6,80
F0155	80 8M 50	7	GG	80	203,72	202,35	-	110	180	60	60	18	-	6,90
F0156	90 8M 50	8	GG	90	229,18	227,81	-	110	204	60	60	18	-	8,60
F0157	112 8M 50	8	GG	112	285,21	283,83	-	110	254	60	60	18	-	9,60
F0158	144 8M 50	8	GG	144	366,69	365,32	-	110	336	60	60	20	-	13,80
F0159	168 8M 50	8	GG	168	427,81	426,44	-	120	400	60	60	20	-	16,00
F0160	192 8M 50	8	GG	192	488,92	487,55	-	130	460	60	60	20	-	22,40

# Koła zębate

## Koła zębate o podziałce metrycznej 8M



**8M**

podziałka: 8 mm

koła dla pasa o szerokości: 85 mm

kod	typ	rysunek	materiał	Z	dp	de	Df	Dm	Di	F	L	d	numer flanszy	[kg]
F0161	22 8M 85	2F	St	22	56,02	54,65	60	43	-	95	105	12	308	1,60
F0162	24 8M 85	2F	St	24	61,11	59,75	66	45	-	95	105	12	310	1,95
F0163	26 8M 85	2F	St	26	66,21	64,84	70	48	-	95	105	12	311	2,30
F0164	28 8M 85	2F	St	28	71,30	70,08	75	50	-	95	105	15	312	2,60
F0165	30 8M 85	2F	St	30	76,39	75,13	83	55	-	95	105	15	314	3,10
F0166	32 8M 85	2F	St	32	81,49	80,16	87	60	-	95	105	15	315	3,70
F0167	34 8M 85	2F	St	34	86,58	85,22	91	66	-	95	105	15	316	4,00
F0168	36 8M 85	2F	St	36	91,67	90,30	97	70	-	95	105	15	319	4,70
F0169	38 8M 85	2F	St	38	96,77	95,39	102	75	-	95	105	15	320	5,10
F0170	40 8M 85	2F	St	40	101,86	100,49	106	75	-	95	105	18	321	5,40
F0171	44 8M 85	2F	St	44	112,05	110,67	120	75	-	95	105	18	325	6,70
F0172	48 8M 85	2F	St	48	122,23	120,86	128	80	-	95	105	18	327	7,20
F0173	56 8M 85	2F	St	56	142,60	141,23	150	90	-	95	105	18	333	10,00
F0174	64 8M 85	7F	St	64	162,97	161,60	168	100	137	95	95	20	338	10,40
F0175	72 8M 85	7F	St	72	183,35	181,97	192	100	158	95	95	20	340	11,40
F0176	80 8M 85	7	GG	80	203,72	202,35	-	110	180	95	95	20	-	11,10
F0177	90 8M 85	8	GG	90	229,18	227,81	-	110	204	95	95	20	-	12,20
F0178	112 8M 85	8	GG	112	285,21	283,83	-	110	254	95	95	24	-	15,00
F0179	144 8M 85	8	GG	144	366,69	365,32	-	110	336	95	95	24	-	21,50
F0180	*168 8M 85	8	GG	168	427,81	426,44	-	120	400	95	95	24	-	24,10
F0181	*192 8M 85	8	GG	192	488,92	487,55	-	130	460	95	95	24	-	30,60

\*Na specjalne zamówienie.